



# Wormington Compressor Station

MCPD Investment Project

Wormington Parish Community Presentation

3rd June 2024

19:00



# Agenda

1. **Introducing the Project Team**
2. **MCPD Project Background & Purpose**
3. **Regulator/Local Authority Engagement**
4. **Project Highlights**
5. **Community Engagement Approach**
6. **Q&A**

# Introducing the MCPD Project Team



External Affairs Lead – Shivani Nana



Project Director – Darren Christie



Senior Project Manager – Huw Riley



Lead Project Manager – Chris Bligh



Senior Area Operations Manager – Alex Groves



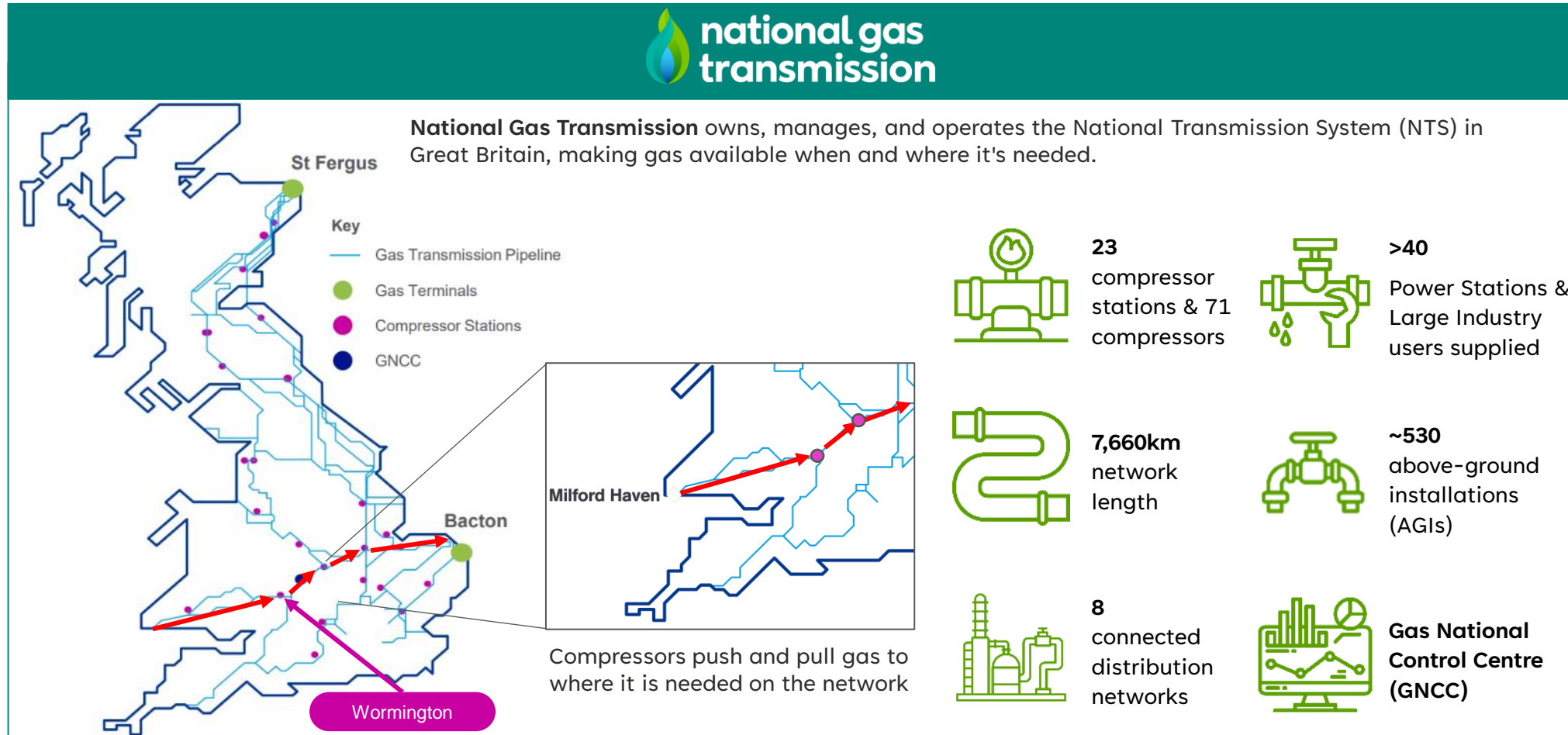
Senior Operations Engineer (Wormington) – Tim Goslett

# MCPD Compressor Emissions

## Project Background & Purpose

# National Gas Overview

## Our essential role in keeping Britain's homes warm and its industry moving



In 2021...

About

**42%**

of the country's energy generated by gas

**23m**

British homes used gas for heating

**25%**

of industry used gas to power manufacturing operations

Source: [Digest of UK Energy Statistics](#)

# NGT's Environmental Strategy

NGT is at the heart of one of the greatest challenges facing our society today – delivering clean energy to support our world far into the future. We will do this by developing the green gas system of tomorrow, while delivering the natural gas needs of today.

We have a number of short-term and long term targets to help us to progress towards this green future:

## Short Term Strategy

- We are investing in our compressor fleet to reduce compressor emissions from our older, less efficient compressors units (**MCPD legislation**)
- We are trialling new technology to modify our existing units to reduce NOx emissions
- We continue to stretch our construction sustainability targets (carbon neutral construction, zero waste to landfill, increased use of recycling, etc.)

## Long Term Strategy

- Future Grid Project: Isolated test site to trial introduction of hydrogen onto the NTS
- Project Union Project: Connecting hydrogen industrial clusters with dedicated pipelines across the UK

# What is MCPD and why does it impact Wormington?

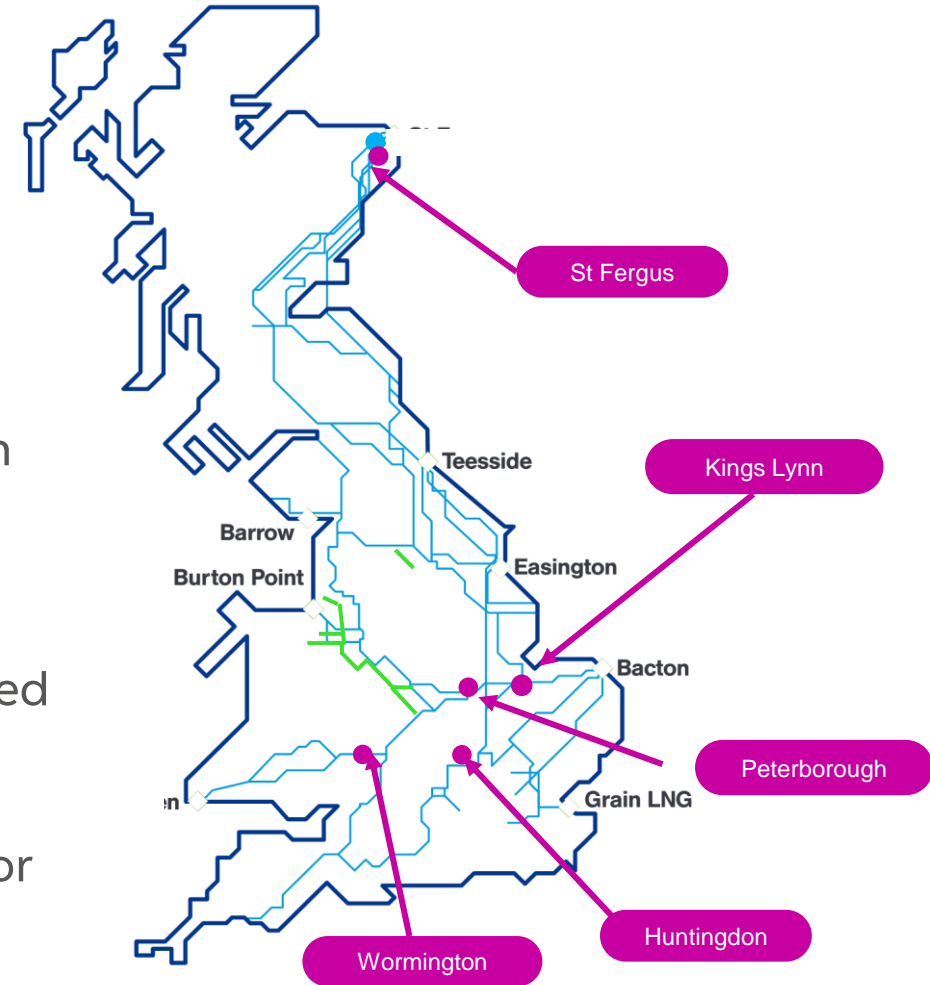
NGT is committed to helping reduce the UK's impact on the environment

Central to this commitment is investment in our existing compressor fleet to replace, refurbish or remove assets which no longer meet strict emissions legislation such as MCPD

Medium Combustion Plant Directive (MCPD) Legislation sets out strict rules to control emissions of sulphur dioxide (SO<sub>2</sub>), nitrogen oxides (NO<sub>x</sub>) and dust into the air

This legislation comes into effect by 1st January 2030 by which time any impacted asset must either be made compliant, removed from service or limited to 500 hours per year

Wormington is one of 5 priority MCPD sites agreed with Ofgem for future investment

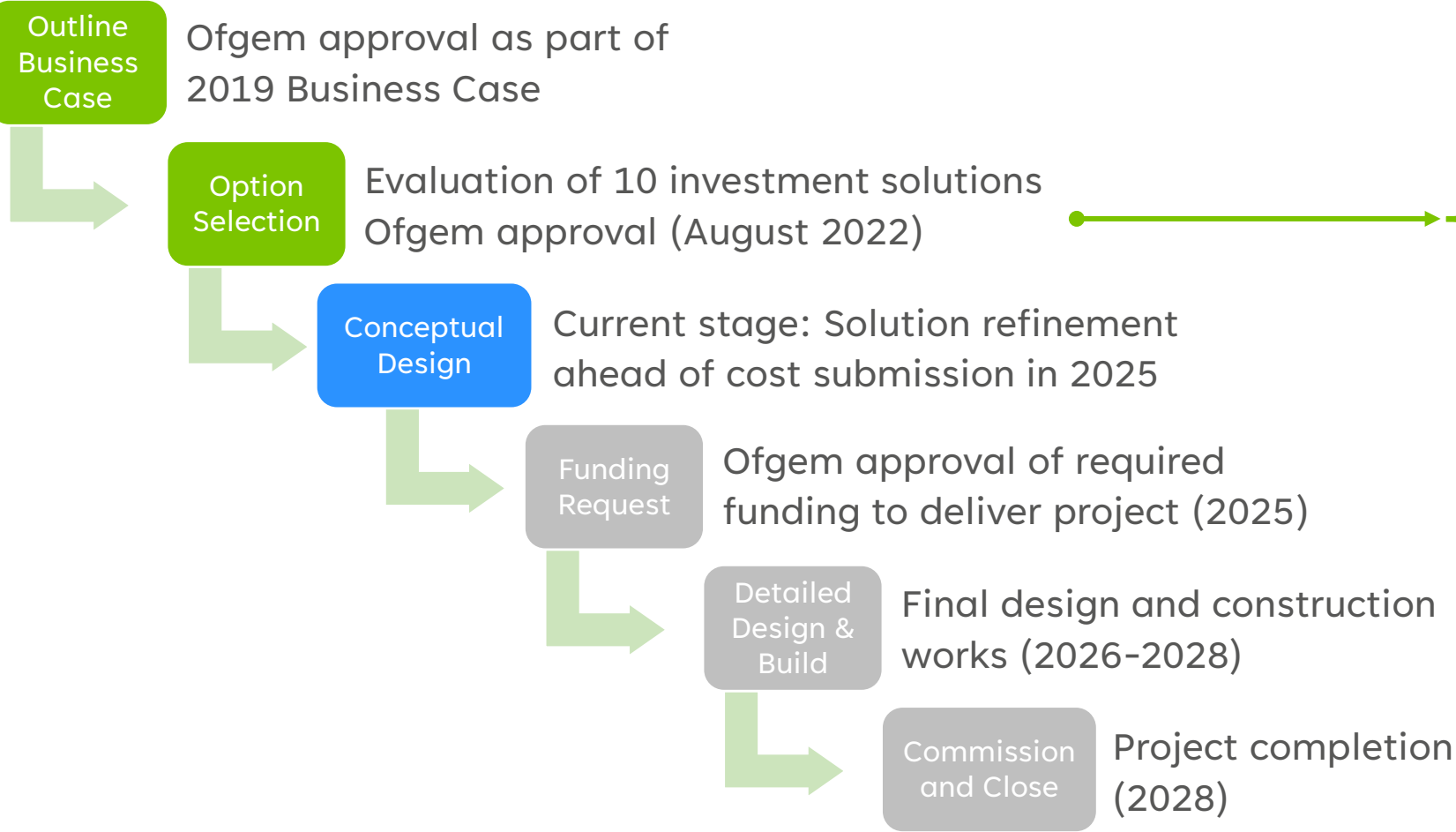


# MCPD Compressor Emissions

Regulator/Local Authority Engagement



# NGT Engagement with Ofgem (Our Regulator)



#	Option Selection Solutions
1	Do Nothing
2	Software Upgrade (A&B)
3	Mechanical Upgrade (A&B)
4	Mechanical Upgrade (Unit A)
5	Mechanical Upgrade 2 (A&B)
6	Mechanical Upgrade 3 (A&B)
7	1 x New Compressor + Unit A general upgrade
8	1 x New Compressor + Unit A software upgrade
9	1 x New Compressor + Unit A mechanical upgrade
10	2 x New Compressors

# NGT Engagement with Tewkesbury Borough Council

- Project requires planning permission from Tewkesbury Borough Council prior to construction
- NGT have sought formal pre-application advice from council planning officers to ensure we provide the information the council needs to approve the application
- Tewkesbury identified the surveys we will need to carry out and the relevant local planning policies we need to consider
- Advice did not raise any fundamental objections, but noted a number of potential environmental impacts we'll need to assess and address via dedicated survey
- There will be a chance to comment on the proposals prior to the planning application being submitted
- Planning application to be submitted in 2025. Residents can formally comment on the application.

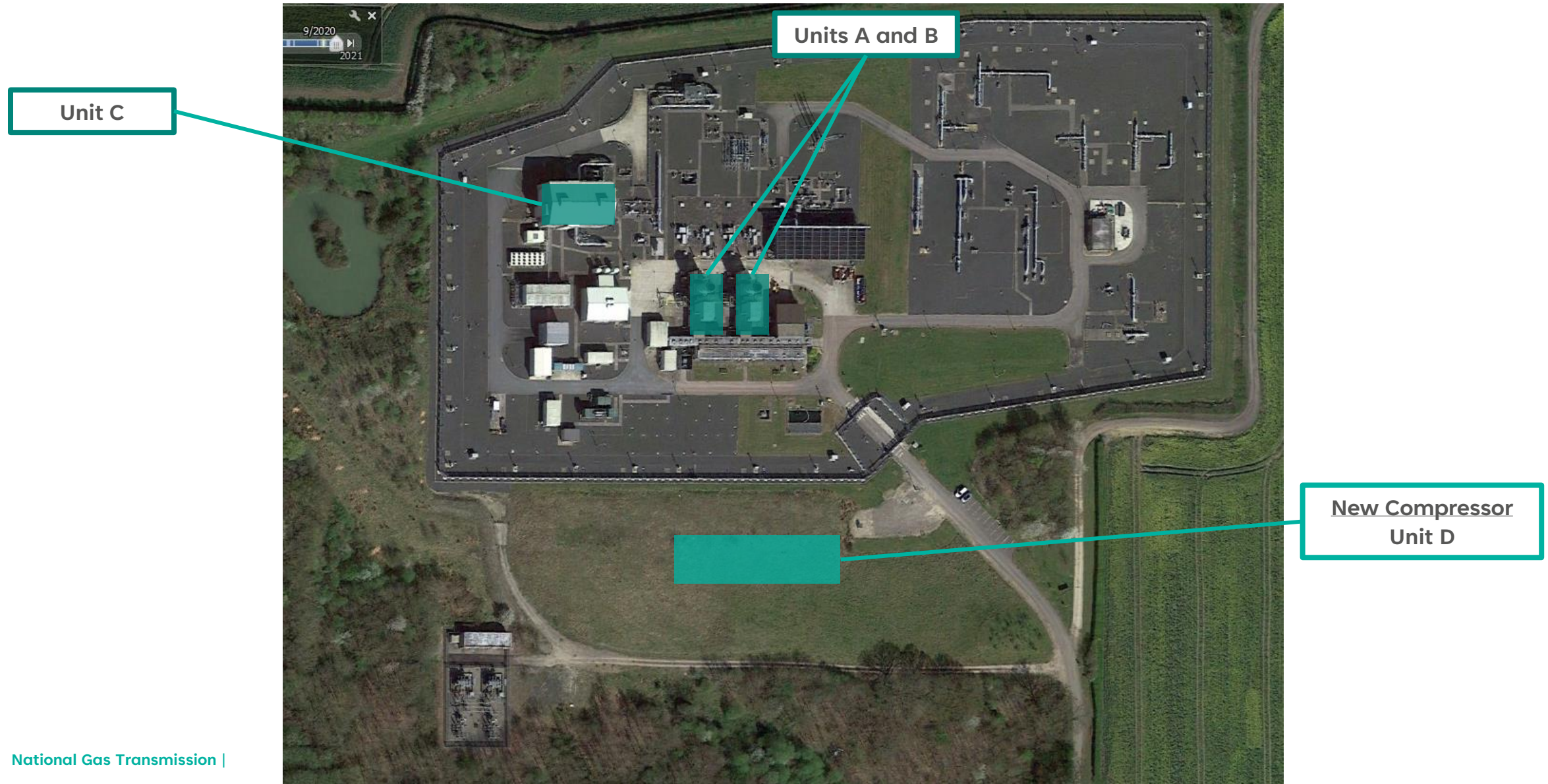
# NGT Engagement with Environment Agency

- Work commenced on the feasibility and selection of new compressor drive train equipment in early 2020 and a preliminary Best Available Techniques (BAT) report was produced in August 2020.
- The Environment Agency (EA) were kept informed of the NGT process for feasibility and selection of equipment via our regular Installation Inspector visits and communications
- EA attended site in Sept 2020 where NGT presented the needs case, options and the proposals of the BAT report
- Since then, NGT has kept the EA up to date on project developments with regular communications
- Later this year, Sept/Oct 2024, the EA are again attending site for the detailed update on new installation plan following Ofgem's approval of the Final Preferred Option (1 x new compressor unit & asset health investment on Unit A)

# MCPD Compressor Emissions

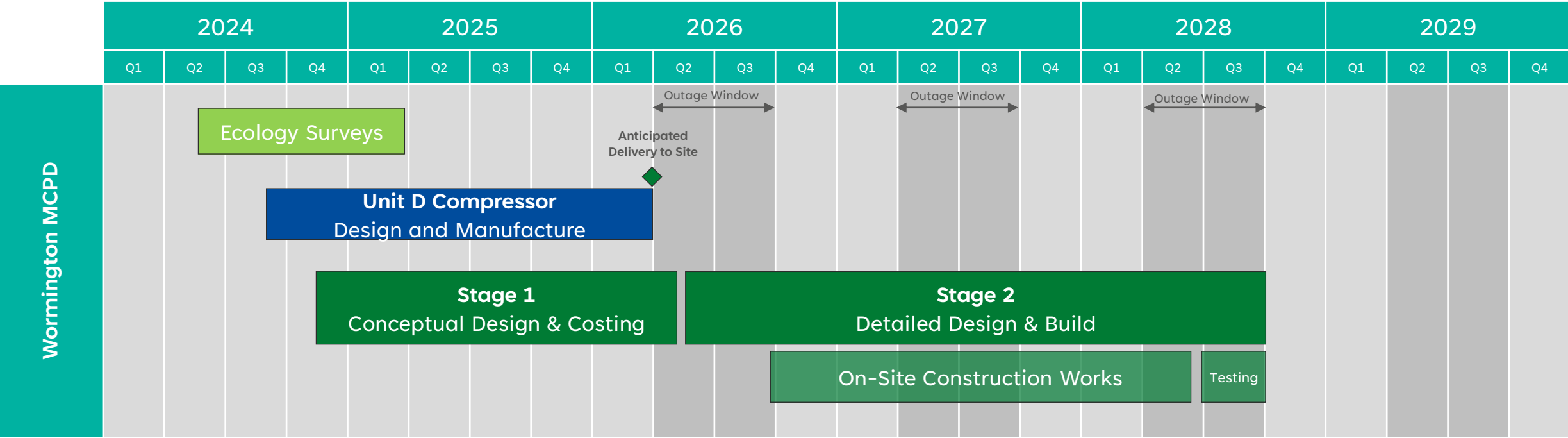
## Project Highlights

# Wormington Compressor Station Overview



# Wormington MCPD – High-Level Delivery Plan

Updated: 29-May-2024





# Environmental Assessments

Ecology surveys to assess impact on local trees, flora, fauna, etc.

- 12<sup>th</sup> June: General walk around local fields, ponds & access roads
- June: Survey of water habitats (ponds, streams, etc.) and breeding bird survey
- Sept: Reptile Survey
- October: Water vole survey

Station visual viewpoint survey

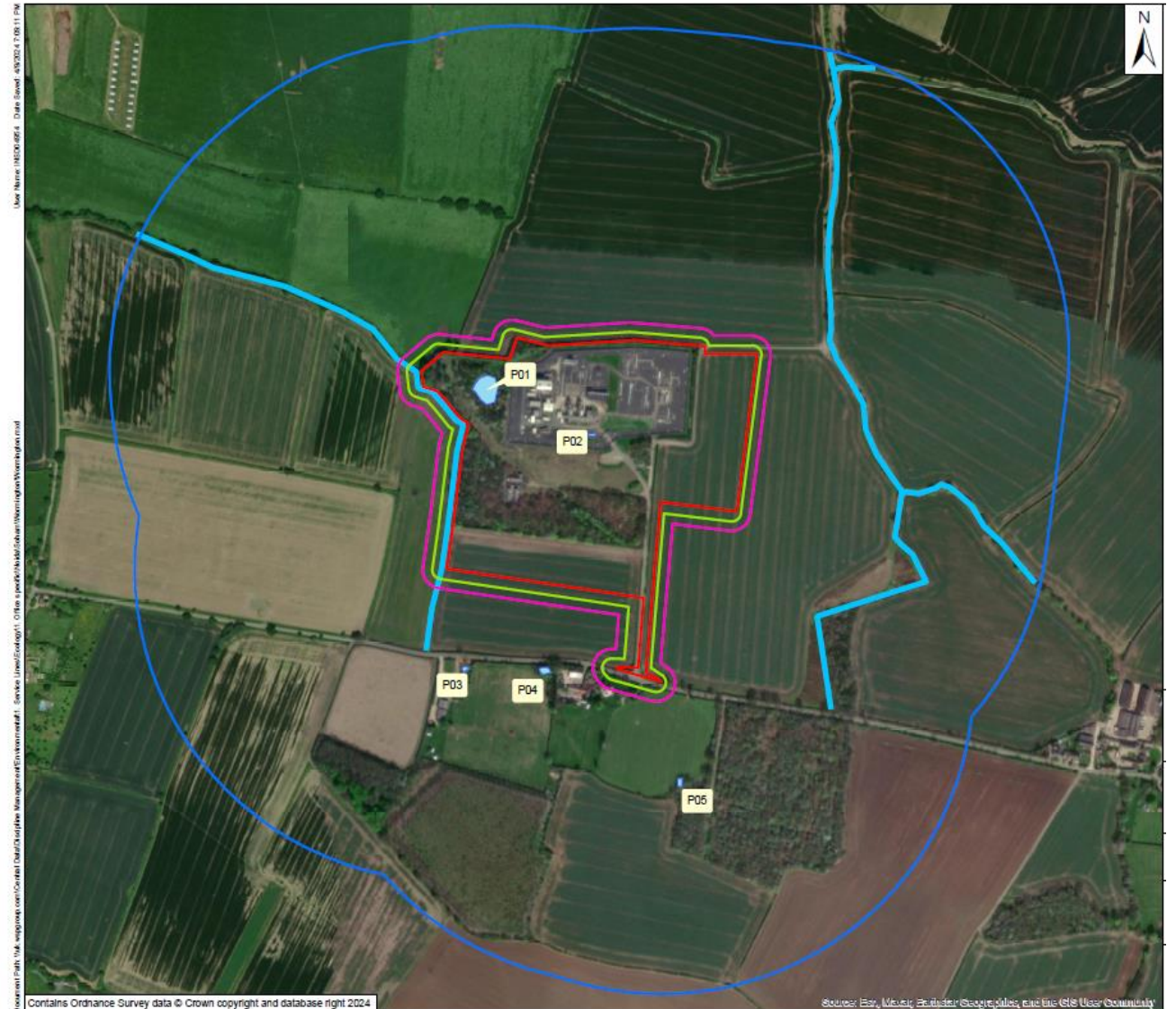
- Will be performed from local access roads

Noise baseline measurement near local receptors – 17<sup>th</sup> June to 12<sup>th</sup> July

Air quality modelling

Archaeology

Flood risk assessment



# MCPD Compressor Emissions

## Community Engagement Approach



# Community Engagement Approach

25-July (2022): National Gas volunteering at St Egwin's School, Evesham


11-March: Wormington Parish Community Event

10-May: Project update letter issued to Wormington community

17-May: Land access requests for ecological surveys issue to effected landowners

03-June: Parish Council Update





### Community Grant Fund

National Gas's Community Fund flows to the heart of communities the UK. We're proud to contribute to charitable investment in our local areas.

We support projects focusing on social, economic and environmental benefits run by charities and community groups that meet local needs.

All applicants must clearly demonstrate in their application that the project is impacted by National Gas Transmission's operations to meet the criteria for a community grant.

We do not accept direct applications from National Gas employees but welcome our colleagues support in promoting our Community Grant to causes and communities that could most benefit.

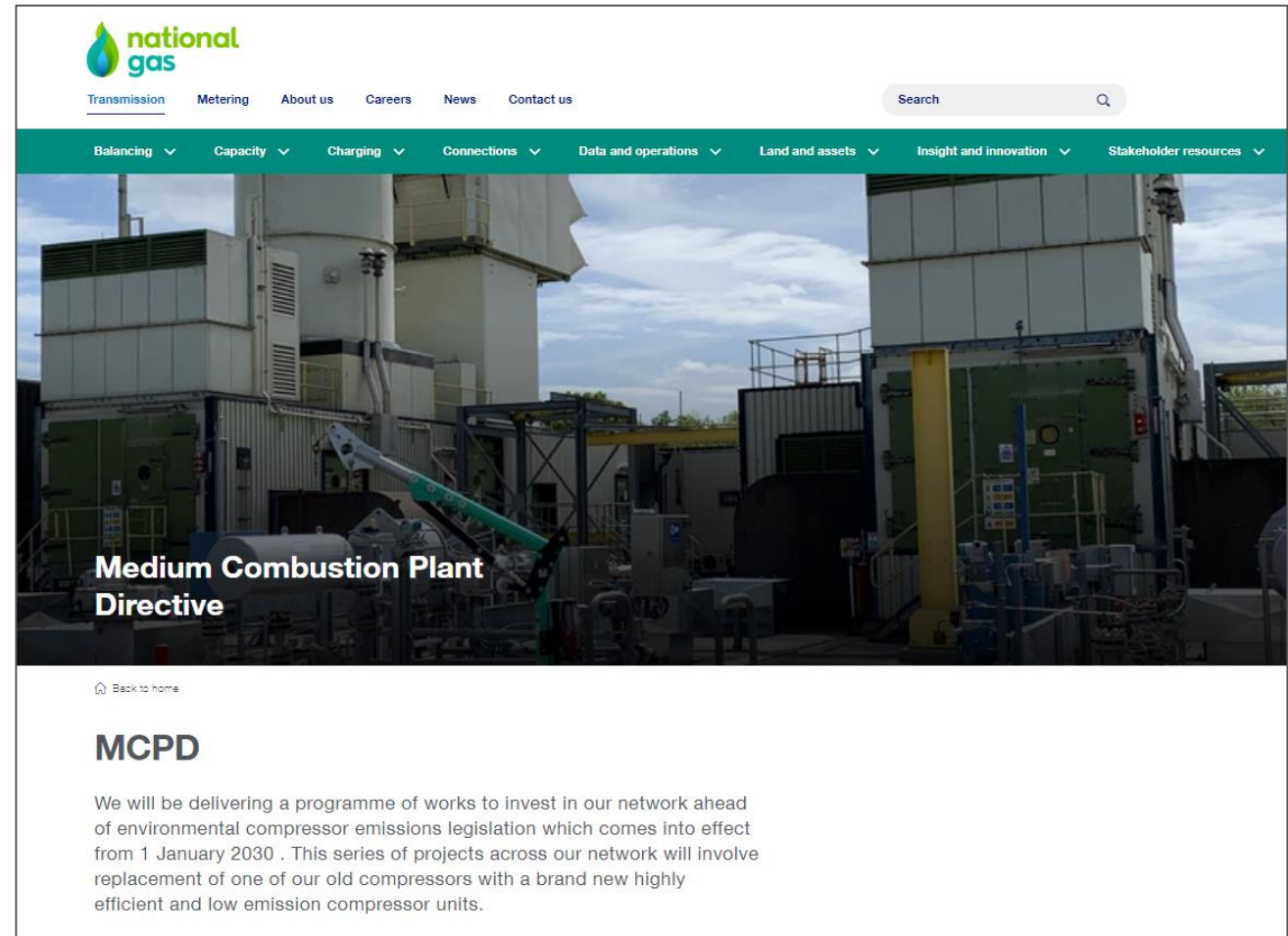
[Click here to apply for community funding from National Gas](#)

# How to find out more

- You can visit our project website at <https://www.nationalgas.com/mcpd>
- We will be reaching out at various points on the project with updates

## Contact us

- Telephone 0800 319 6185 (our team are available 9am-5pm Mon - Fri)
- Email: [wormington@nationalgas.com](mailto:wormington@nationalgas.com)



**Thank You**

**Any Questions for the Team?**





# Approach to Project Traffic

- Large consignments (compressor sections) are constrained by train bridge (see right); may need to be transported through Wormington village
- All other traffic would take green route

